

## Section 4.2 Extra Practice

1. State whether you would multiply or divide to determine the missing value.

a)  $\frac{1}{2} = \frac{x}{250}$

b)  $\frac{1}{3.2} = \frac{14}{y}$

c)  $\frac{1}{z} = \frac{6.3}{24.9}$

d)  $\frac{1}{0.25} = \frac{w}{6.25}$

2. Calculate the missing value in each proportion.

a)  $\frac{1}{8} = \frac{\square}{624}$

b)  $\frac{1}{50} = \frac{25.2}{\square}$

c)  $\frac{1}{0.6} = \frac{58}{\square}$

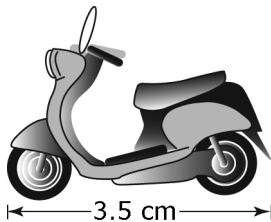
d)  $\frac{1}{\square} = \frac{15.3}{1224}$

e)  $\frac{1}{75} = \frac{\square}{6450}$

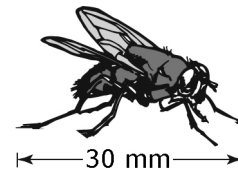
f)  $\frac{1}{\square} = \frac{5.6}{1.68}$

3. Calculate the actual length of each object.

a) The scale for the image of the scooter is 1 : 20.



b) The scale for the enlarged image of a housefly is 1 : 0.3.



4. Determine the scale factor.

a)  $\square = \frac{53}{106}$

b)  $\square = \frac{0.9}{15}$

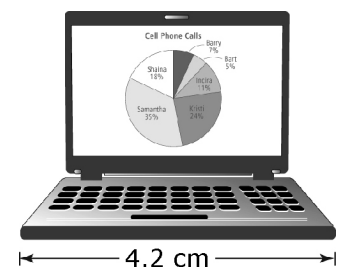
c)  $\square = \frac{17}{850}$

d)  $\square = \frac{6.2}{24.8}$

e)  $\square = \frac{18}{24}$

f)  $\square = \frac{30}{37.5}$

5. An actual laptop has a width of 39.5 cm. Calculate the scale factor used in the image of the laptop. Express the answer to the nearest tenth.



6. A driving distance is 650 km. The distance shown on a map is 4 cm.

a) Express the map scale in words.

b) What is the scale factor? Express the answer to the nearest tenth.